



STATE OF NORTH CAROLINA
DEPARTMENT OF TRANSPORTATION

BEVERLY EAVES PERDUE
GOVERNOR

EUGENE A. CONTI, JR.
SECRETARY

March 11, 2010

NCDOT Contracted GeoEnvironmental Firms

Re: **Standard Figure Requirements**

Dear Firm:

In an effort to consistently obtain figures with the level of detail required for our purposes, we have developed a list of items that will be required on all figures from this point forward. Exceptions will be made for projects that do not have design files available and on a case by case basis to be discussed with the project manager prior to submitting a report. Figures that do not meet the minimum requirements will be returned for corrections and these corrections will be reflected in the final project evaluation score. Sample base map figures are enclosed for your reference.

Reference Files

The attached table lists the required design files that should be referenced to your figures. While the design files are required, every level within the file does not need to be displayed. For example, the "dsn" file is required but the level displaying the super elevation can be turned off.

Color or Gray Scale

You will note that one of the enclosed sample figures is color and the other is gray scale. Both are acceptable, and it is up to the Firm to decide how to present the data. However, if you use color, you must map the yellow design elements to black in the Pen Table before you plot.

Symbology

If your plots have what appear to be random letters instead of a design feature, such as a string of Ps where a tree line should be, you are not using the symbology defined in the NCDOT Workspace. The NCDOT Workspace and other useful CADD information can be found on our CADD Services web page: <http://www.ncdot.org/doh/CADD/>.

If you have any questions about this policy or need help implementing it please let me know.

Sincerely,

A handwritten signature in blue ink, appearing to read "C. Parker".

Cyrus F. Parker, LG, PE
GeoEnvironmental Supervisor
Geotechnical Engineering Unit

Enclosure

cc:
GeoEnvironmental Section Project Managers
Mohammed Mulla, PE, Assistant State Geotechnical Engineer

MAILING ADDRESS:
NC DEPARTMENT OF TRANSPORTATION
GEOTECHNICAL ENGINEERING UNIT
GEOENVIRONMENTAL SECTION
1589 MAIL SERVICE CENTER
RALEIGH NC 27699-1589

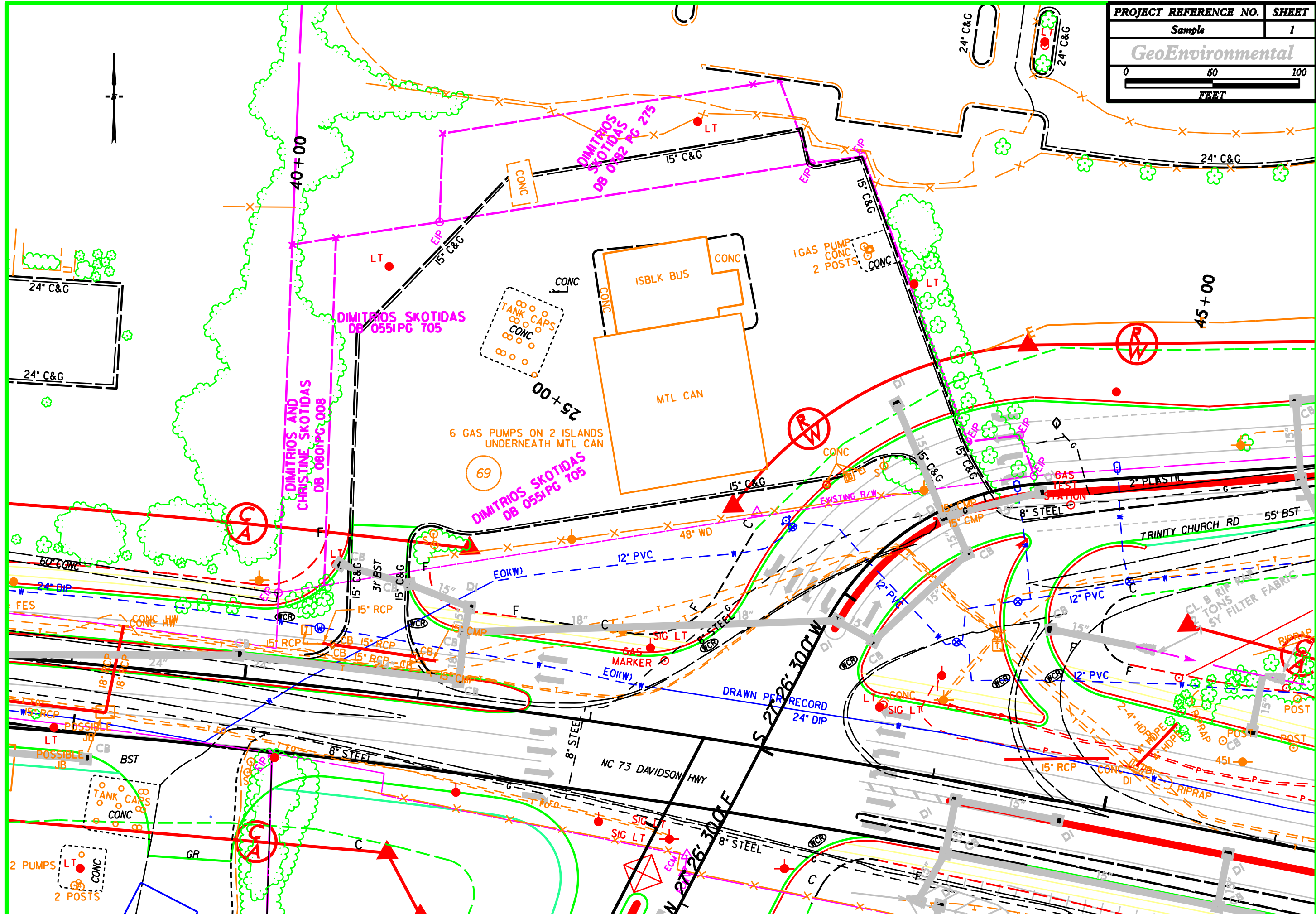
TELEPHONE: 919-250-4088
FAX: 919-250-4237
www.ncdot.gov

LOCATION:
CENTURY CENTER COMPLEX
BUILDING B
1020 BIRCH RIDGE DRIVE
RALEIGH NC 27610

Required Reference Files for NCDOT Projects

File	Description	Typical File Name
PLN FS	Existing Planimetrics such as buildings, roads and vegetation	TIP_LS_PLN.DGN TIP_NCDOT_FS.DGN
PRL	Existing property boundaries and existing right of way	TIP_LS_PRL.DGN
SUE	Existing subsurface utilities such as phone, fiber, power	TIP_LS_SUE.DGN
HYL	Existing drainage	TIP_LS_HYL.DGN
ROW	Proposed right of way	TIP_RDY_ROW.DGN
DRN	Proposed drainage	TIP_HYD_DRN.DGN
SS	Proposed slope stake such as limits of cut and fill slopes	TIP_RDY_SS.DGN
DSN	Proposed design such as alignment, new edge of pavement and medians	TIP_RDY_DSN.DGN

PROJECT REFERENCE NO.	SHEET
Sample	1
<i>GeoEnvironmental</i>	



DIMITRIOS SKOTIDAS
DB 0551PG 705

DIMITRIOS AND
CHRISTINE SKOTIDAS
DB 0801PG 008

DIMITRIOS SKOTIDAS
DB 0551PG 705

69

NC 73 DAVIDSON HWY

TRINITY CHURCH RD

S 2726' 300' W

N 2726' 300' E

24" C&G

24" C&G

40+00

25+00

45+00

2 PUMPS
LT
CONC
2 POSTS

FES

CONC HW

BST

TANK CARS
CONC

GR

8" STEEL

8" STEEL

8" STEEL

8" STEEL

12" PVC

12" PVC

15" RCP

15" RCP

15" RCP

24" DIP

2" PLASTIC

2" PLASTIC

2" PLASTIC

2" PLASTIC

2" PLASTIC

2" PLASTIC

15" RCP

15" RCP

15" RCP

15" RCP

15" RCP

15" RCP

15" RCP

15" RCP

15" RCP

15" RCP

15" RCP

15" RCP

15" RCP

15" RCP

15" RCP

15" RCP

15" RCP

15" RCP

15" RCP

15" RCP

15" RCP

15" RCP

15" RCP

15" RCP

15" RCP

15" RCP

15" RCP

15" RCP

15" RCP

15" RCP

15" RCP

15" RCP

15" RCP

15" RCP

15" RCP

15" RCP

15" RCP

15" RCP

15" RCP

15" RCP

15" RCP

15" RCP

15" RCP

15" RCP

15" RCP

15" RCP

15" RCP

15" RCP

15" RCP

15" RCP

15" RCP

15" RCP

15" RCP

15" RCP

15" RCP

15" RCP

15" RCP

15" RCP

15" RCP

15" RCP

15" RCP

15" RCP

15" RCP

15" RCP

15" RCP

15" RCP

15" RCP

15" RCP

15" RCP

15" RCP

15" RCP

15" RCP

15" RCP

15" RCP

15" RCP

15" RCP

15" RCP

15" RCP

15" RCP

15" RCP

15" RCP

15" RCP

15" RCP

15" RCP

15" RCP

15" RCP

15" RCP

15" RCP

15" RCP

15" RCP

15" RCP

15" RCP

15" RCP

15" RCP

15" RCP

15" RCP

15" RCP

15" RCP

15" RCP

15" RCP

15" RCP

15" RCP

15" RCP

15" RCP

15" RCP

15" RCP

15" RCP

15" RCP

15" RCP

15" RCP

15" RCP

15" RCP

15" RCP

15" RCP

15" RCP

15" RCP

15" RCP

15" RCP

15" RCP

15" RCP

15" RCP

15" RCP

15" RCP

15" RCP

15" RCP

15" RCP

15" RCP

15" RCP

15" RCP

15" RCP

15" RCP

15" RCP

15" RCP

15" RCP

15" RCP

15" RCP

15" RCP

15" RCP

15" RCP

15" RCP

15" RCP

15" RCP

15" RCP

15" RCP

15" RCP

15" RCP

15" RCP

15" RCP

15" RCP

15" RCP

15" RCP

15" RCP

15" RCP

15" RCP

15" RCP

15" RCP

15" RCP

15" RCP

15" RCP

15" RCP

15" RCP

15" RCP

15" RCP

15" RCP

15" RCP

15" RCP

15" RCP

15" RCP

15" RCP

15" RCP

15" RCP

15" RCP

15" RCP

15" RCP

15" RCP

15" RCP

15" RCP

15" RCP

15" RCP

15" RCP

15" RCP

15" RCP

15" RCP

15" RCP

15" RCP

15" RCP

15" RCP

15" RCP

15" RCP

15" RCP

15" RCP

15" RCP

15" RCP

15" RCP

15" RCP

15" RCP

15" RCP

15" RCP

15" RCP

15" RCP

15" RCP

15" RCP

15" RCP

15" RCP

15" RCP

15" RCP

15" RCP

15" RCP

15" RCP

15" RCP

15" RCP

15" RCP

15" RCP

15" RCP

15" RCP

15" RCP

15" RCP

15" RCP

15" RCP

15" RCP

15" RCP

15" RCP

15" RCP

15" RCP

15" RCP

15" RCP

15" RCP

15" RCP

15" RCP

15" RCP

15" RCP

15" RCP

15" RCP

15" RCP

15" RCP

15" RCP

15" RCP

15" RCP

15" RCP

15" RCP

15" RCP

15" RCP

15" RCP

15" RCP

15" RCP

15" RCP

15" RCP

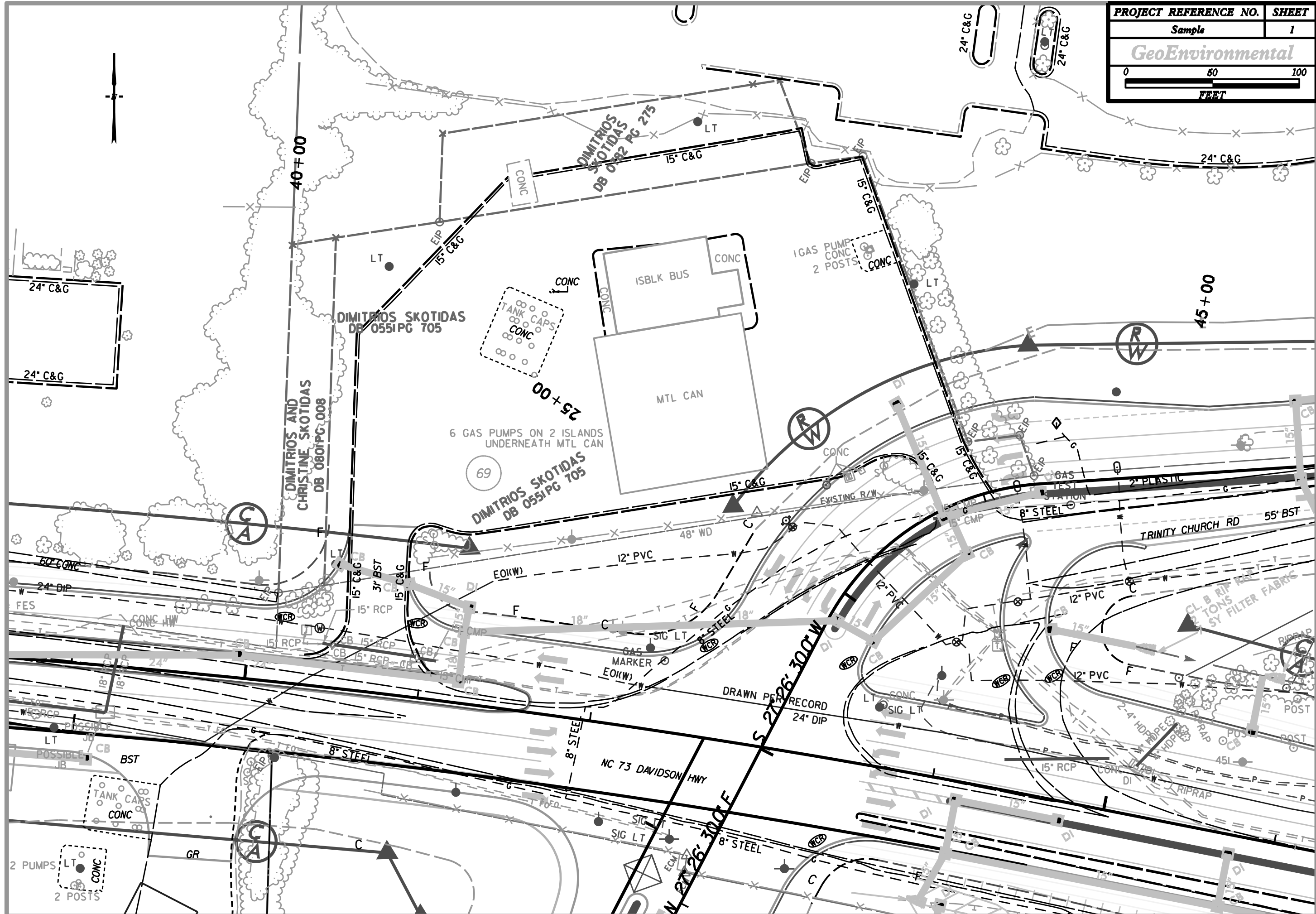
15" RCP

15" RCP

15" RCP

15" RCP

15" RCP



DIMITRIOS AND
 CHRISTINE SKOTIDAS
 DB 0801PG 008

DIMITRIOS SKOTIDAS
 DB 0551PG 705

DIMITRIOS SKOTIDAS
 DB 082 PG 275

DIMITRIOS SKOTIDAS
 DB 0551PG 705

NC 73 DAVIDSON HWY

TRINITY CHURCH RD

DRAWN PER RECORD

N 27°26' 30.0\"/>

S 27°26' 30.0\"/>

6 GAS PUMPS ON 2 ISLANDS
UNDERNEATH MTL CAN

1 GAS PUMP
CONC
2 POSTS

2 PUMPS
LT
CONC
2 POSTS

TANK CARS
CONC

TANK CAPS
CONC

MTL CAN

ISBLK BUS

24\"/>

24\"/>

40+00

25+00

45+00

69

(A)

(A)

(R)

(R)

(R)

(R)

FES

POSSIBLE
JB

BST

GR

EOI(W)

EOI(W)

SIG LT

SIG LT

SIG LT

ECM

SIG LT

SIG LT

POST

POST

POST

POST

POST

POST

FES

POSSIBLE
JB

BST

GR

EOI(W)

EOI(W)

SIG LT

SIG LT

SIG LT

ECM

SIG LT

SIG LT

POST

POST

POST

POST

POST

POST